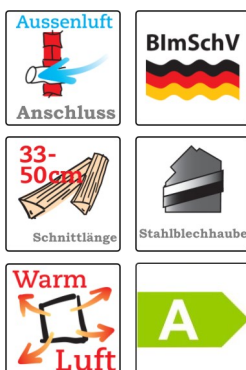


FIREPLACE KIT SYSTEM FROM BRUNNER



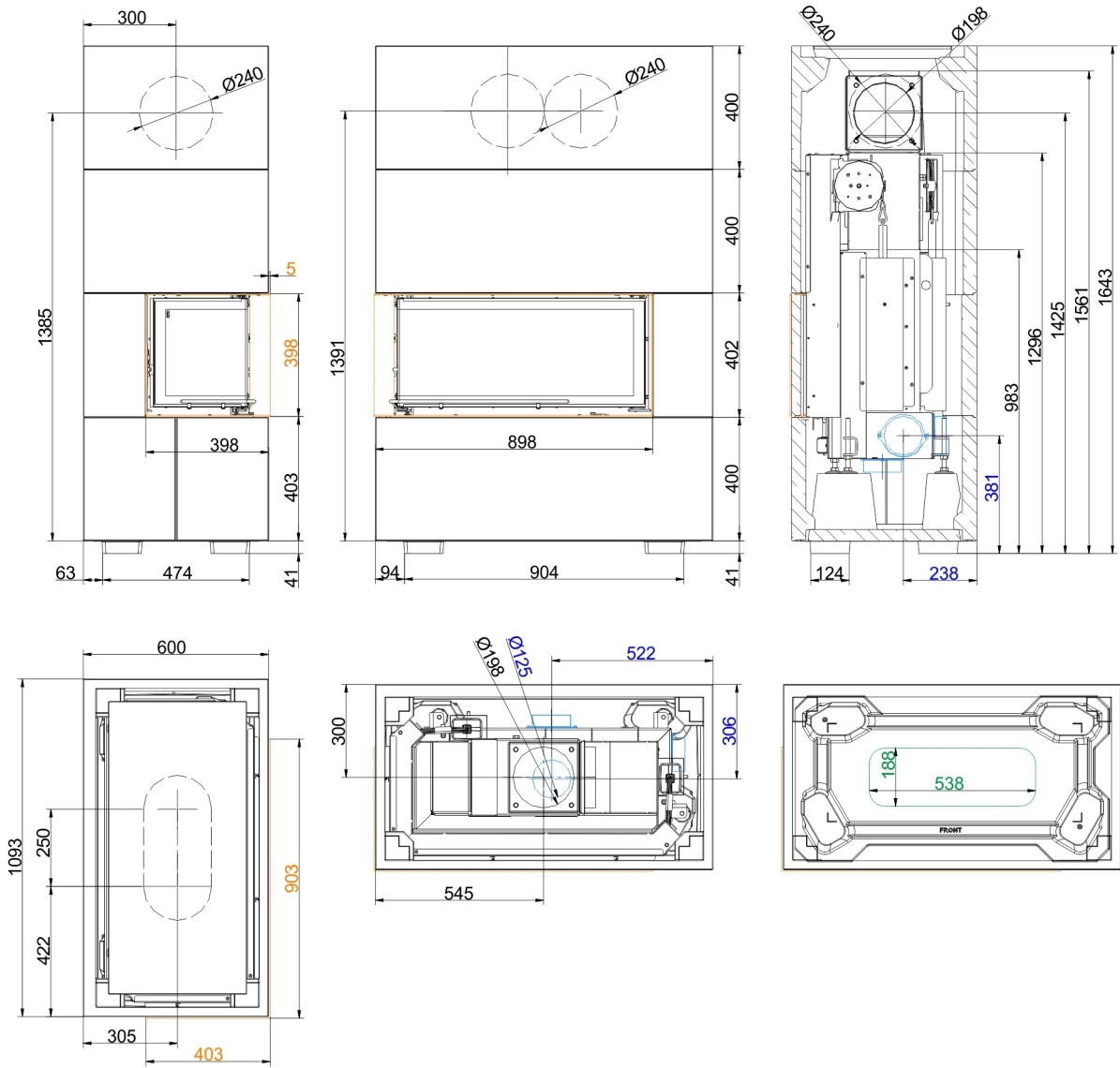
BSK 07 with Architektur-Eck 38/86/36

State: 2023-08-28



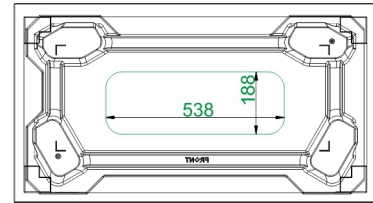
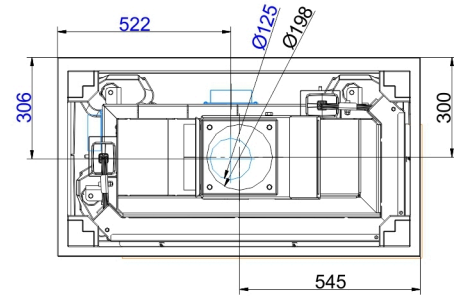
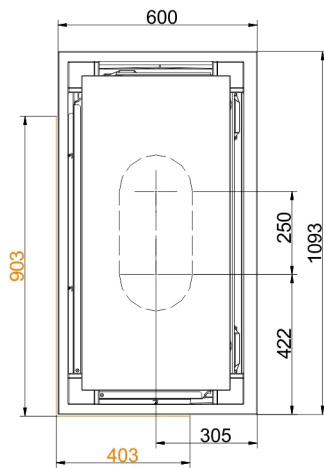
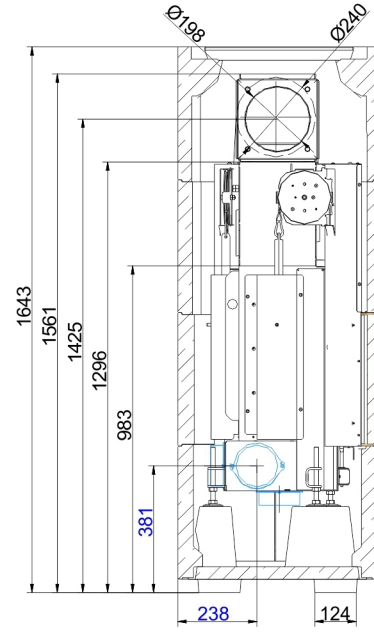
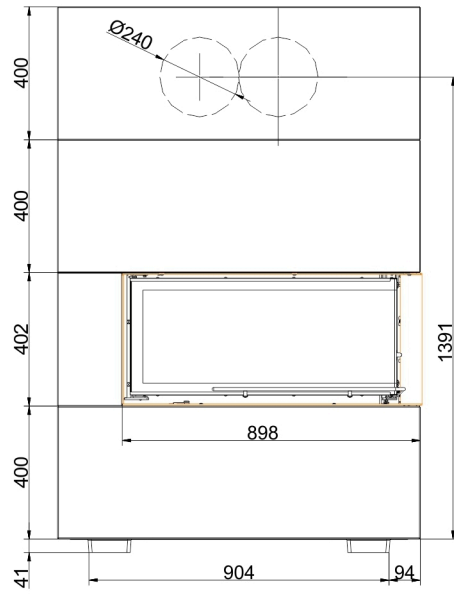
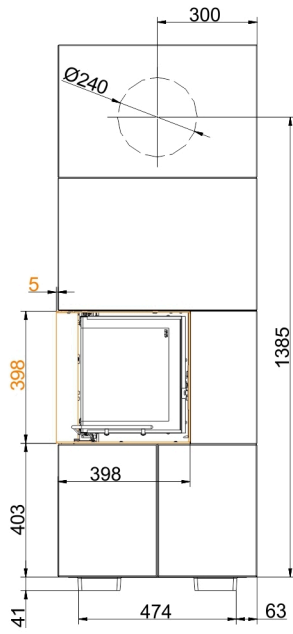
BRUNNER[®]
made in germany.

Dimension sheets - BSK 07 with Architektur-Eck 38/86/36



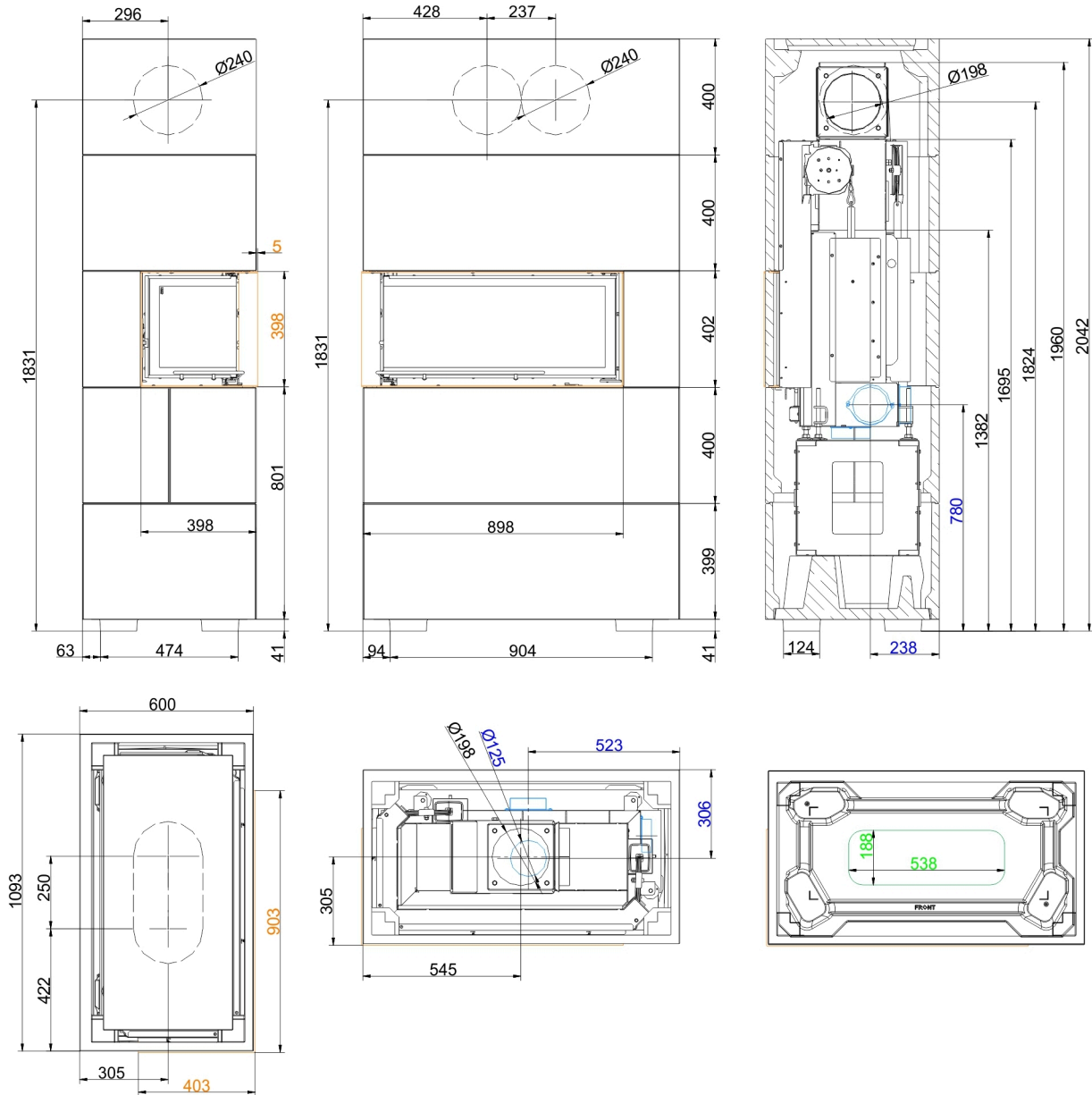
... left

Dimension sheets - BSK 07 with Architektur-Eck 38/86/36



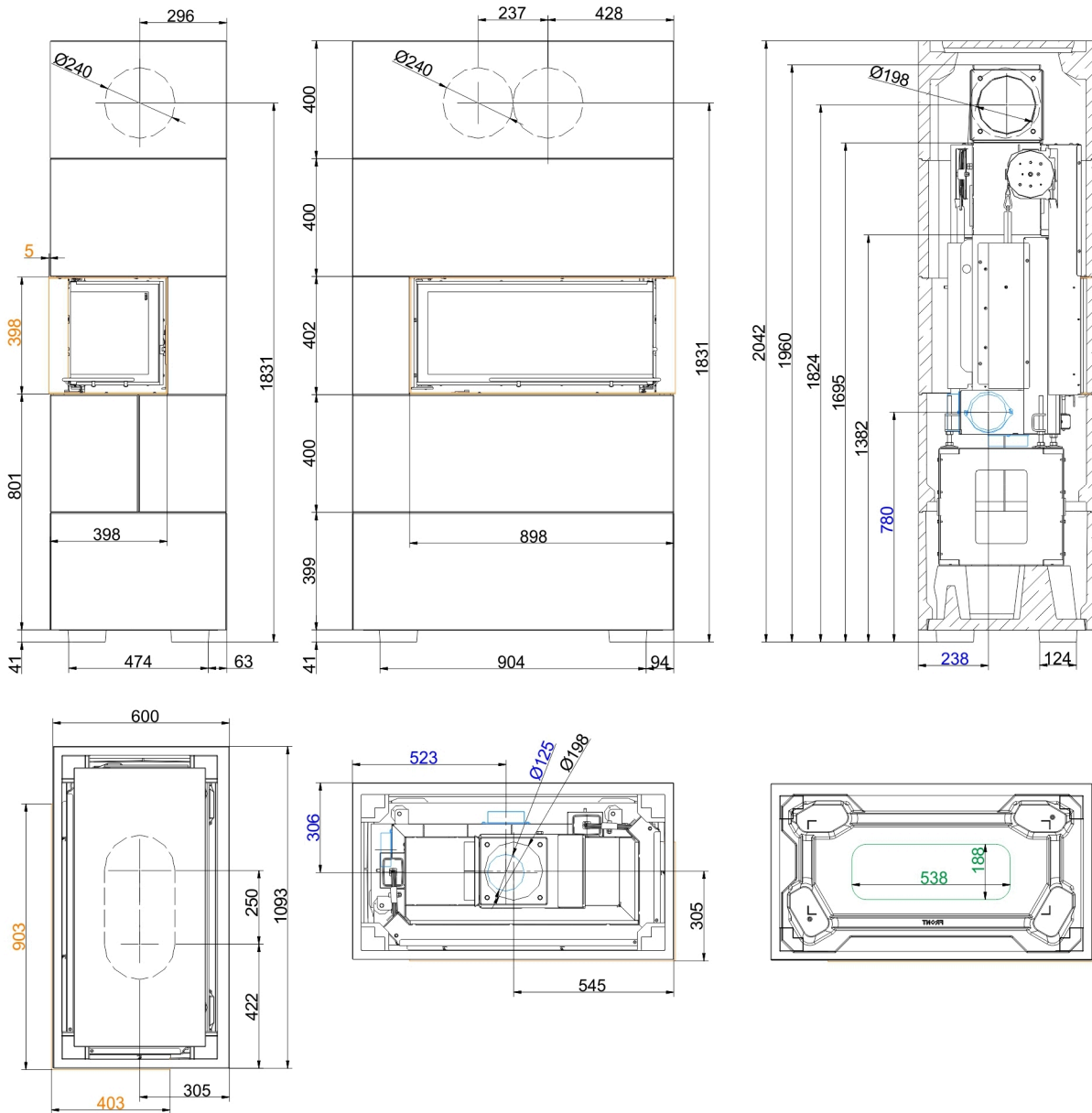
... right

Dimension sheets - BSK 07 with Architektur-Eck 38/86/36



... left high

Dimension sheets - BSK 07 with Architektur-Eck 38/86/36



... right high

We suggest for CAD planning Palette CAD. Permanent updated drawings: www.brunner.de
 Frames/ flue gas outlet connection/ combustion air supply connection/ front variants/ support bearing are marked in color.

Planning and installation - BSK 07 with Architektur-Eck 38/86/36

Tested according to	EN 13229	
Data for functional demonstration		
Rated heat power	kW	10
Fire wood volume	kg/h	3.1
Flue gas mass flow	g/s	11
Flue gas temperature	°C	220
Necessary supply pressure ¹⁾	Pa	12
Combustion air consumption	m ³ /h	30
Combustion air connection Ø	mm	125
Cladding components ²⁾		
Foot print (W x D)	mm	1093 x 600
Overall height	mm	1643 / 2042
Height of extension ring	mm	400
Minimal distances		
to mounting wall	cm	5
to mounting wall with heat protection panels	cm	0
to combustible mounting wall	cm	10
to combustible mounting wall with heat protection panels	cm	5
from top of fireplace to ceiling	cm	50
Cross-section of gratings ³⁾		
Convection air	cm ²	985
Supply air	cm ²	900
Weight		
Total weight	kg	564 / 647
Meets requirement/limit values for:		
Germany/ Austria / Switzerland / Norway	1.BImSchV (Stufe 2) / - / LRV / NS 3059	

- 1) Damper flap recommended
- 2) Quality features of the cladding components in concrete look (fair-faced concrete class 2-3)

Dimensional tolerances of the casting mold parts

Straightness: +- 2 mm/m

Length/width/thickness: +- 2 mm

Squareness: +- 2 mm

Flatness: +- 2,5 mm

Surface to visible side

Textur: closed and largely uniform; repair areas with color changes and hairline cracks permissible.

Porosity: max. three holes with diameter <10 mm and depth <10 mm (reference area 100x100 mm).

Colour shade: uniform, large-area light/dark discolouration and cement haze permissible; no rust and dirt spots as well as different bulk layers.

Note: deviations in color tone (e.g. extension rings) can be adjusted by applying a glaze-like paint (our recommendation: DecoLasur Matt tinted in the colour shade Schiefer16, Caparol).

With the BRUNNER revision set (Art. No. 900300), touch-up work can be carried out on the cladding components.

- 3) Existing convection air openings. If the construction differs from the supplied system kit (e.g. construction up to the ceiling or closed construction), the information in the data sheet is decisive for carrying out the cross section of the convection air openings.